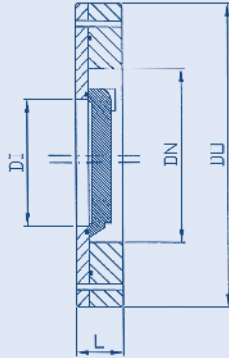
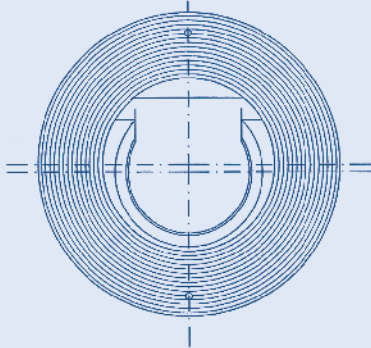


SHORT PATTERN SWING TYPE WAFER CHECK VALVE



SPECIAL CHARACTERISTICS

- Lightweight
- Extremely compact
- Economical
- Low maintenance
- Easily installed
- Tight shut-off (resilient seat)
- One moving part
- Retained disc
- One piece disc and shaft for maximum strength
- Complies with API 6D
- Suitable for all common flanges

Model	716	726	746	756	766	776	786
Body	Bronze	Steel	316 S.S.	Monel	Titanium	Hastelloy	D.S.S.
Seat Carrier	Bronze	316 S.S.	316 S.S.	Monel	Titanium	Hastelloy	D.S.S.
Disc	Bronze	316 S.S.	316 S.S.	Monel	Titanium	Hastelloy	D.S.S.

Seat	Metal	Suffix 'M'
	Viton	Suffix 'V'
	P.T.F.E.	Suffix 'P'

Principle Dimensions

Nominal size 'DN' (mm)	40	50	65	80	100	125	150	200	250	300
Inlet bore 'DI' (mm)	26	35	46	57	80	102	125	166	208	250
Min. out. pipe bore (mm)	40	50	65	78	100	125	150	200	250	300
Length 'L' (mm)	19	19	19	19	19	19	19	29	29	38
Outside diameter 'DO' (mm)	See table on page 3									
Weight (Kg)	1	2	2	3	4	5	6	14	25	50

Working temperatures up to 600°C
 Working pressures up to 100 Bar
 Lugged style on request

Larger sizes on request
 Higher pressures on request

Abacus Wafer Check Valves

t: +44 (0)1505 681777
 f: +44 (0)1505 683999

www.abacusvalves.com
 sales@abacusvalves.com

Block 4 Lochshore East
 Industrial Estate Glengarnoch
 Ayrshire KA14 3DB

NOTES

- Wafer pattern design offers significant space and weight reduction compared with traditional flanged valve design
- Superior by design
- 24 hour quotation turn around
- Comprehensive stocks
- Worldwide distribution
- Technical assistance and advice always available